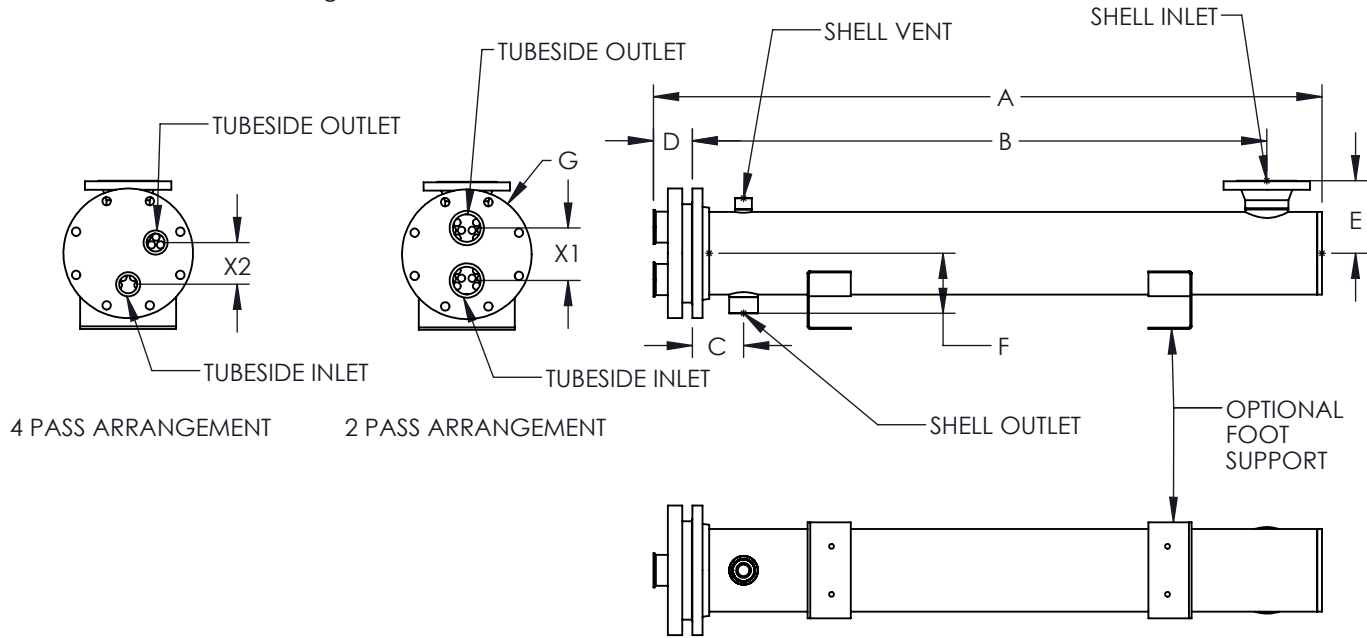


MODEL HYGX 8"

The 8" Shell & Tube is a medium capacity U-Tube heat exchanger. It is available in several sizes and can accommodate flow rates up to 175 gallons per minute. The 8" Shell & Tube has optional foot supports that are suitable for floor or frame installation. Shells are available in 304 stainless steel and tube bundles are available in 304 or 316 stainless steel (other materials available upon request). Port Connections are available as ASME Tri-Clamp, FNPT Connections, or Class 150 Flanged Connections.



SPECIFICATIONS:

MODEL	A	B	C	D	E	F	G	X ₁	X ₂	SHELL INLET	SHELL OUTLET	TRI-CLAMP SIZE
8x24-01	39.46"	29.84"	5.25"	3.8125"	6.39"	6.29"	13.5"	6.46"	4.352"	2.5" NPT	1.5-2" NPT	2"
8x24-02	39.46"	29.84"	5.25"	3.8125"	6.39"	6.29"	13.5"	5.96"	3.946"	2.5" NPT	1.5-2" NPT	2.5"
8x36-01	51.46"	41.84"	5.25"	3.8125"	6.39"	6.29"	13.5"	6.46"	4.352"	2.5" NPT	1.5-2" NPT	2"
8x36-02	51.46"	41.84"	5.25"	3.8125"	6.39"	6.29"	13.5"	5.96"	3.946"	2.5" NPT	1.5-2" NPT	2.5"
8x54-01	69.46"	59.84"	5.25"	3.8125"	7.56"	6.29"	13.5"	6.46"	4.352"	4" 150# FLG	1.5-2" NPT	2"
8x54-02	69.46"	59.84"	5.25"	3.8125"	7.56"	6.29"	13.5"	5.96"	3.946"	4" 150# FLG	1.5-2" NPT	2.5"
8x72-01	87.46"	77.84"	5.25"	3.8125"	7.56"	6.29"	13.5"	6.46"	4.352"	4" 150# FLG	1.5-2" NPT	2"
8x72-02	87.46"	77.84"	5.25"	3.8125"	7.56"	6.29"	13.5"	5.96"	3.946"	4" 150# FLG	1.5-2" NPT	2.5"
8x84-01	99.46"	89.84"	5.25"	3.8125"	7.56"	6.29"	13.5"	6.46"	4.352"	4" 150# FLG	1.5-2" NPT	2"
8x84-02	99.46"	89.84"	5.25"	3.8125"	7.56"	6.29"	13.5"	5.96"	3.946"	4" 150# FLG	1.5-2" NPT	2.5"
8x114-01	129.46"	119.84"	5.25"	3.8125"	7.56"	6.29"	13.5"	6.46"	4.352"	4" 150# FLG	1.5-2" NPT	2"
8x114-02	129.46"	119.84"	5.25"	3.8125"	7.56"	6.29"	13.5"	5.96"	3.946"	4" 150# FLG	1.5-2" NPT	2.5"

ALL DIMENSIONS ARE APPROXIMATE AND SUBJECT TO CHANGE